

image maker

AMCAP

USER MANUAL



Table of contents

What is AMCAP? _____	3
How to use it? _____	3

What is AMCAP?

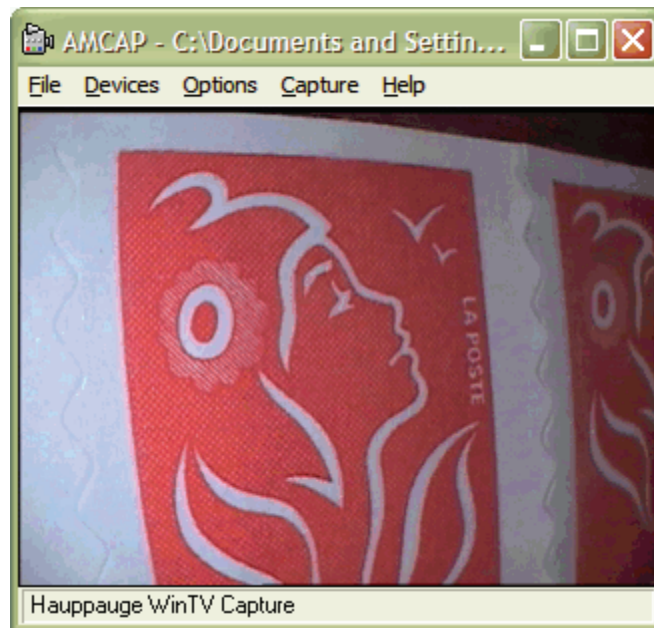
AMCAP is a Microsoft sample program provided here as a test program to validate DirectShow capabilities.

You may use it to test the available video sources on your computer and to test maximum resolution supported by the capture pin.

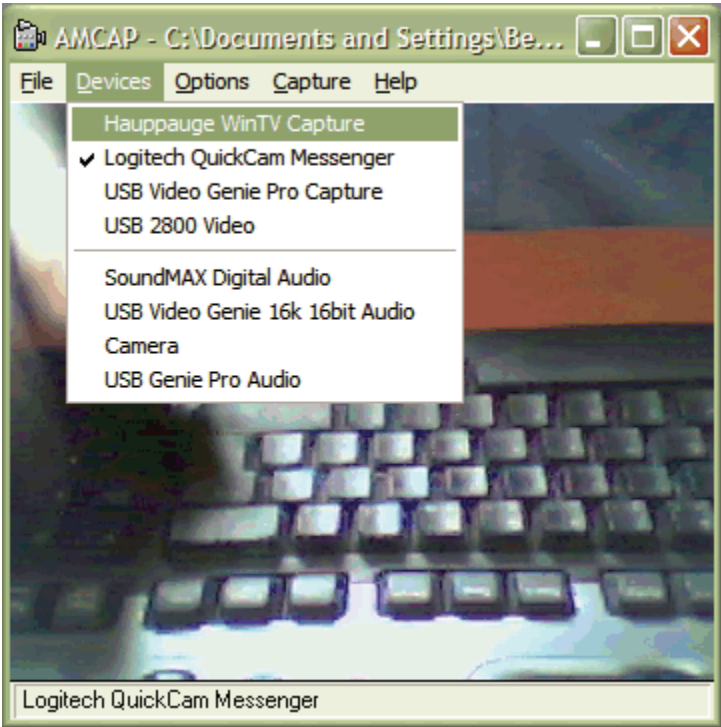
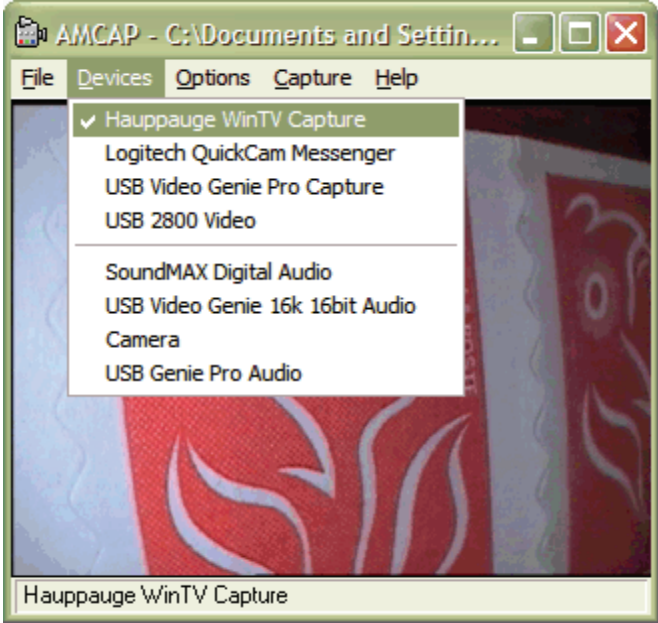
The result must be the same between SOPRO-Imaging and AMCAP.

How to use it?

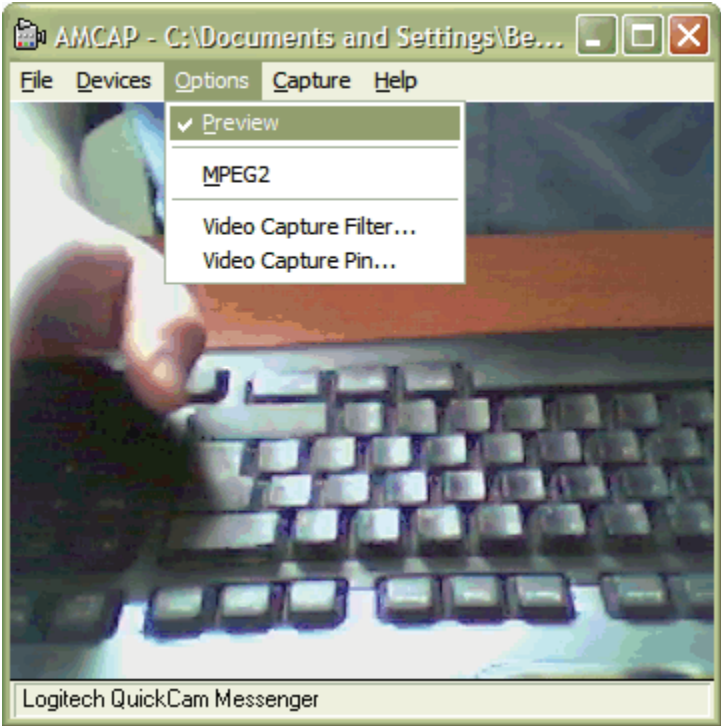
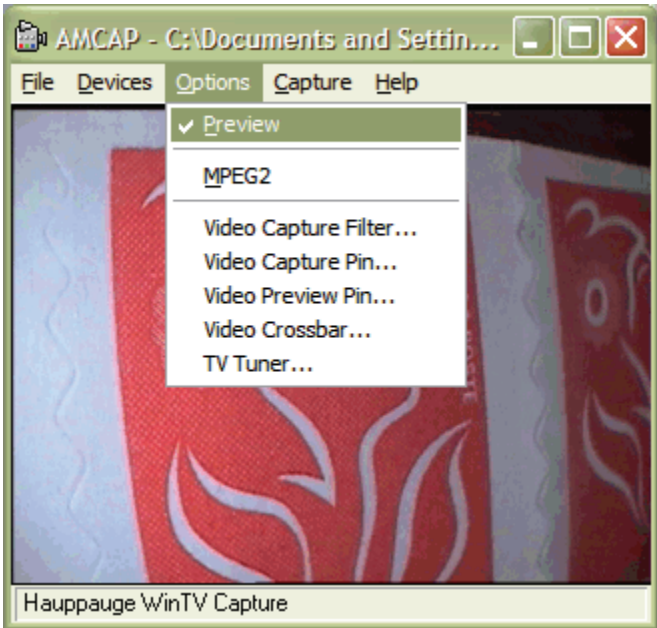
Launch AMCAP, by default it is configured to use the last used source.



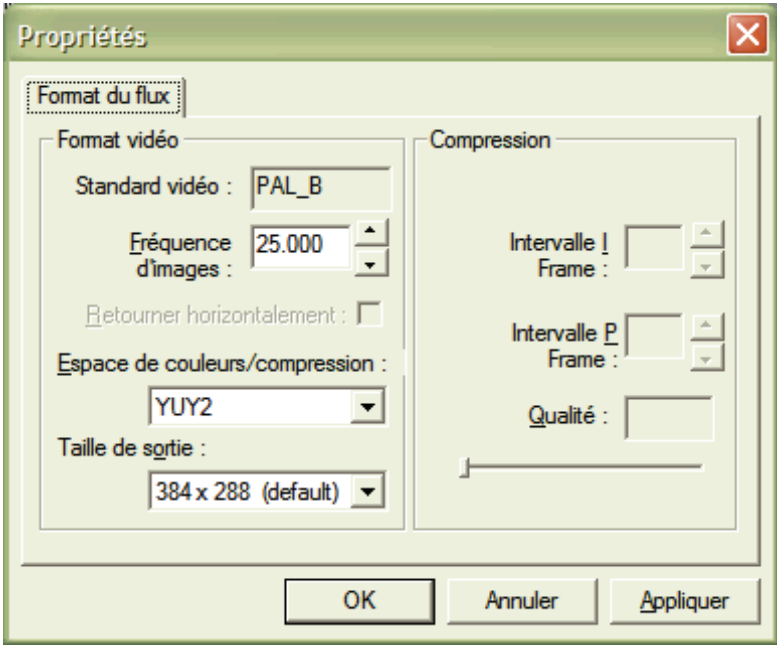
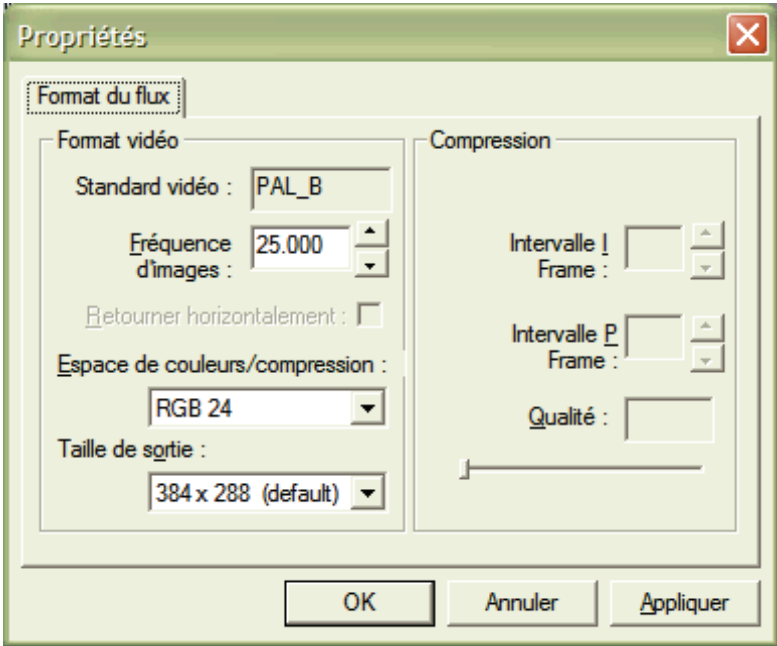
In Devices menu, select the desired source. All the installed Direct Video sources are listed, even the WebCam and TV cards.



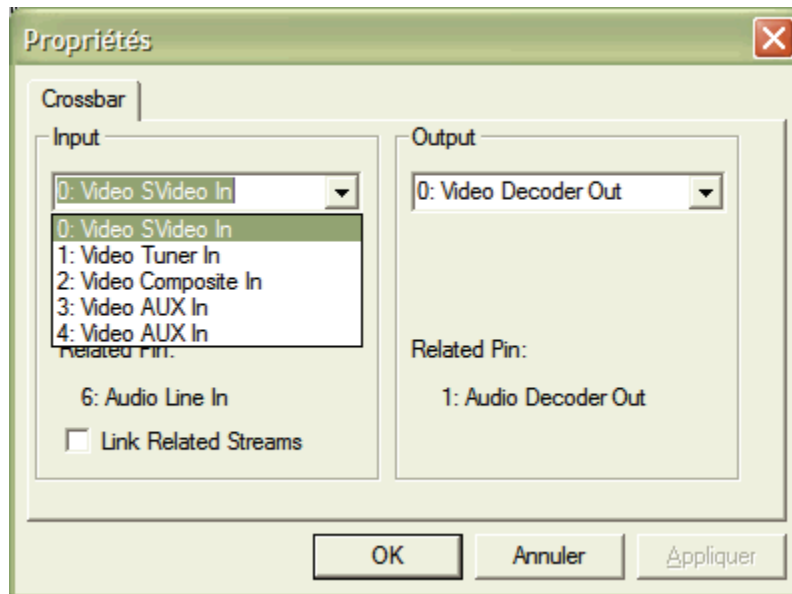
In Options menu, configure Video capture pin and if available, configure Video preview pin. The content of the Options menu depend on the selected video device.



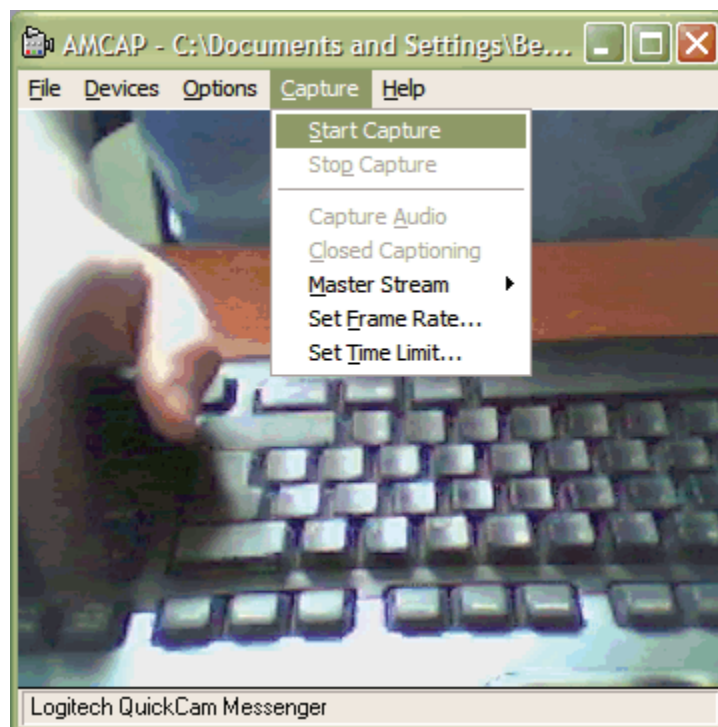
The content of the preview Pin properties may differ from the content of the capture pin properties.



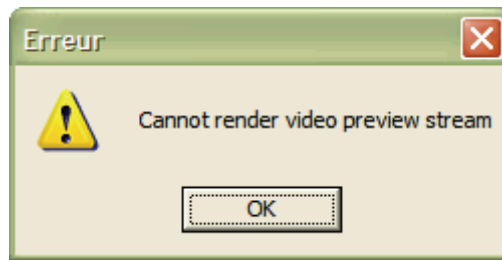
You must see the preview live from the video camera. If not and if available in Options menu, configure Video crossbar and select the right input.



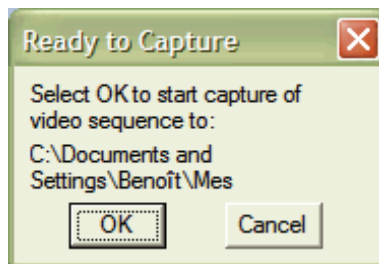
In Capture menu, choose Start capture.



If you have some error you must try a lower capture resolution until it works.



When it works, you see the following window informing you that the system is ready to capture.



You can now reproduce the same setting in SOPRO-Imaging and enjoy your video camera.